

Lighting Information Guide



Under Cabinet Lighting

Timberline

Electrical Requirements:

Your electrician needs to install a switched outlet before walls are finished. The outlet should be positioned behind the bottom right of your mirrored cabinet and behind your vanity drawers (or right side for all-drawer models). We can customize this placement if needed.

LED Lighting Setup

The warm white LED system uses a USB-A transformer (5V/2A) that plugs into your switched outlet. A 12-inch USB cord inside the cabinet gives you flexibility for outlet placement.

Installation Steps

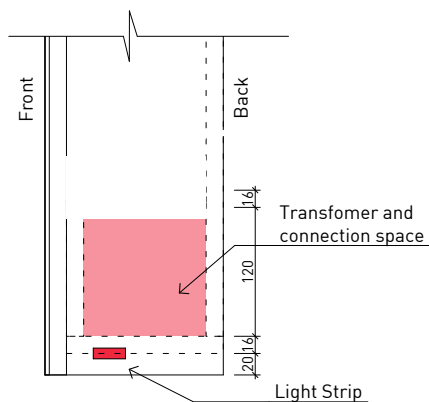
1. Once your cabinet arrives, mark where the switched outlet will be
2. Cut an opening in the cabinet back using a multi-tool or jigsaw
3. Install the cabinet with the outlet mounted in the back
4. Plug in the lighting kit

Technical Specs

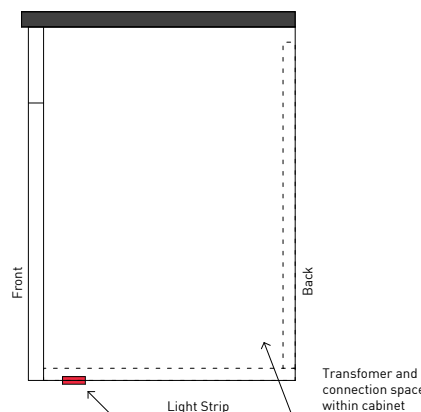
- 1200 lumens
- 4000K warm white (cool white available on request)
- Built-in dimmer on the cord

Need Help? Contact Timberline directly if your electrician needs additional technical specifications.

Mirrored Cabinets



Vanities



NOTE: The lighting will be attached to the base panel of the mirrored cabinet or vanity. For the Brockton MC, Vera and Willow, the lighting will be attached to the base panel of the cabinet NOT attached to the base of the open shelf.



Images of Lighting Installed



Switched Outlet



Lighting Connection

www.timberlinebp.com