

Lighting Information Guide



Under Cabinet Lighting

INFORMATION GUIDE

An electrician will be required to provide in wall wiring and provision for an on/off switch before the bathroom walls are sheeted or tiled. When LED is selected cabinet size may vary slightly.

Warm white LED lighting is powered by a USBA 5v/2a transformer, which comes with a standard plug for connecting to a (switched) outlet.

As standard, your electrician should drop power down to the right-hand side of your mirrored cabinet, and to behind the drawers in your vanity (or right-hand side in all-drawer models) in preparation for your new install. We can customise this side if your new bathroom design requires it – just speak with your store about your options.

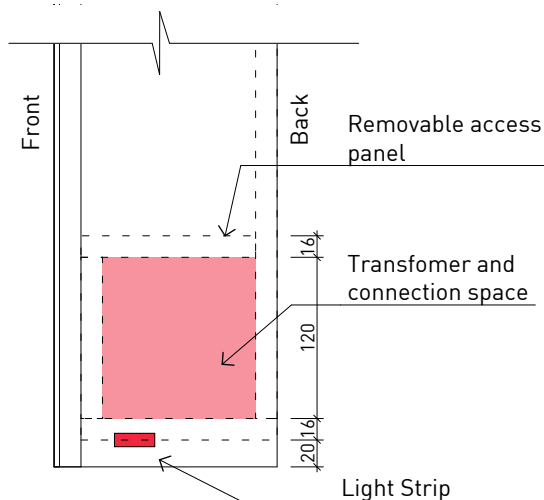
Your electrician will need to switch the outlet to allow you to remotely turn your lights off and on.

Lighting is warm white as standard, cool available upon request. Technical details below;

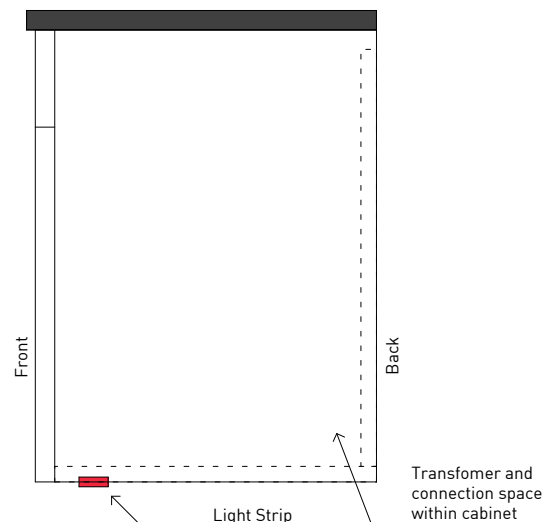
- 1200 lumen
- 4000K warm white
- Dimming adjustments included on wire between lights and plug.

If further information is required by your electrician, please feel free to contact Timberline directly for further technical specifications.

Mirrored Cabinets



Vanities



NOTE: The lighting will be attached to the base panel of the mirrored cabinet or vanity. For the Vera and Willow, the lighting will be attached to the base panel of the cabinet NOT attached to the base of the open shelf.



Images of Lighting Installed



Lighting Connection